

AGA KHAN UNIVERSITY EXAMINATION BOARD

HIGHER SECONDARY SCHOOL CERTIFICATE

CLASS XI

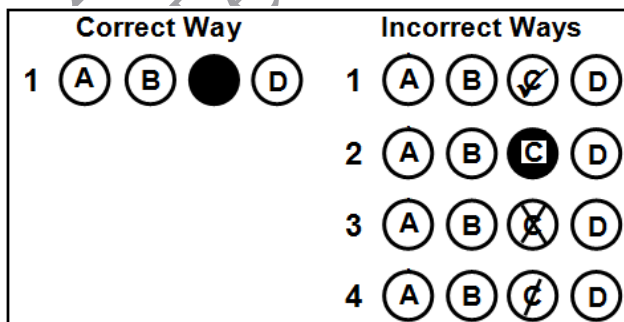
ANNUAL EXAMINATIONS (THEORY) 2023

Fine Arts Paper I

Time: 30 minutes Marks: 20

INSTRUCTIONS

1. Read each question carefully.
2. Answer the questions on the separate answer sheet provided. DO NOT write your answers on the question paper.
3. There are 100 answer numbers on the answer sheet. Use answer numbers 1 to 20 only.
4. In each question, there are four choices A, B, C, D. Choose ONE. On the answer grid, black out the circle for your choice with a pencil as shown below.



Candidate's Signature

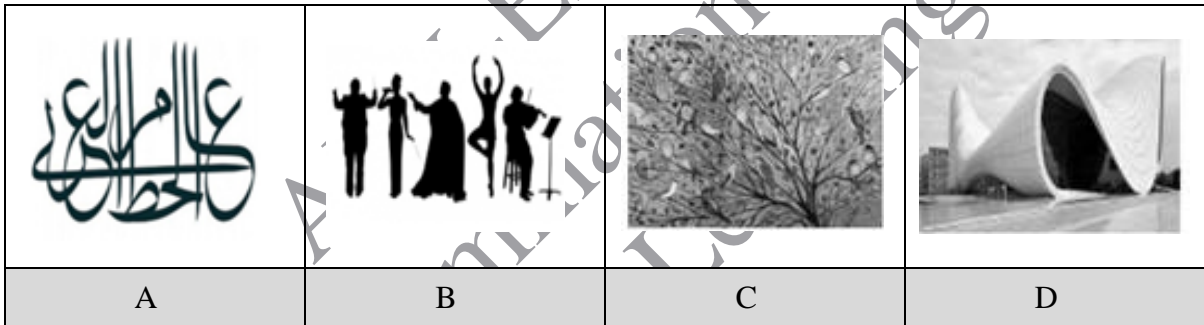
5. If you want to change your answer, ERASE the first answer completely with a rubber, before blacking out a new circle.
6. DO NOT write anything in the answer grid. The computer only records what is in the circles.

1. The branch of art depicted in the given image is



- A. painting.
- B. sculpture.
- C. architecture.
- D. traditional craft.

2. The form of art that depicts performing art is represented as



3. A painter wants to create an art piece with dark black strokes to make expressive marks. The appropriate medium that can be used by the painter would be

- A. crayons.
- B. charcoal.
- C. oil colour.
- D. water colour.

4. Painters avoid using water colours as a medium in their paintings because it

- A. is very expensive.
- B. has a strong odour.
- C. takes a longer time to dry.
- D. turns the paper yellow with time.

5. The MAJOR limitation of using oil paints is that

- A. it is very expensive to obtain.
- B. its application is very time consuming.
- C. it can only be applied on canvas sheets.
- D. it does not have the ability to mix different colours.

6. The element of art reflected in the given image is



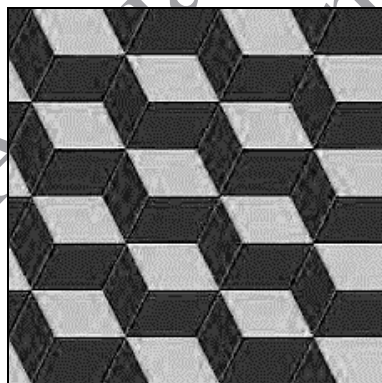
- A. colour.
- B. form.
- C. value.
- D. space.

7. The element of art shown in the given image is



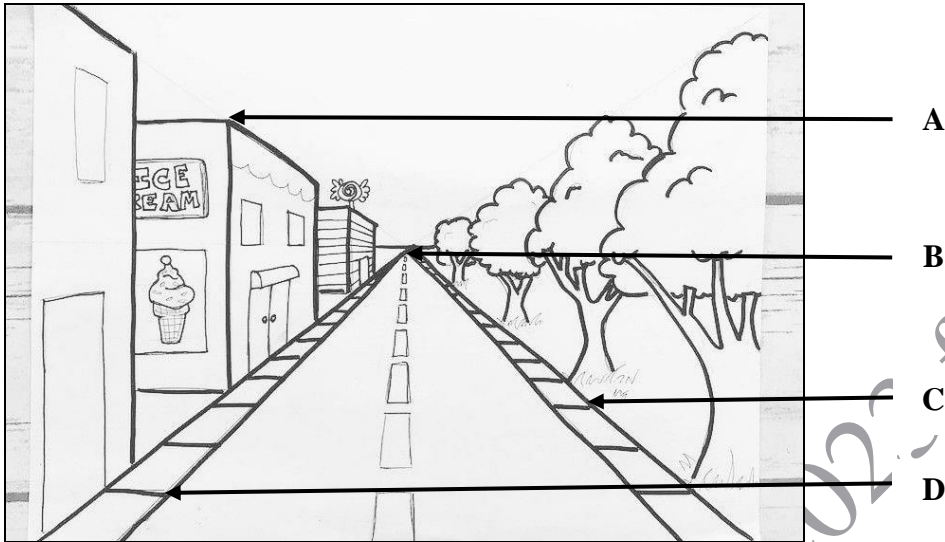
- A. texture.
- B. shape.
- C. value.
- D. line.

8. The principle of design portrayed in the given image is

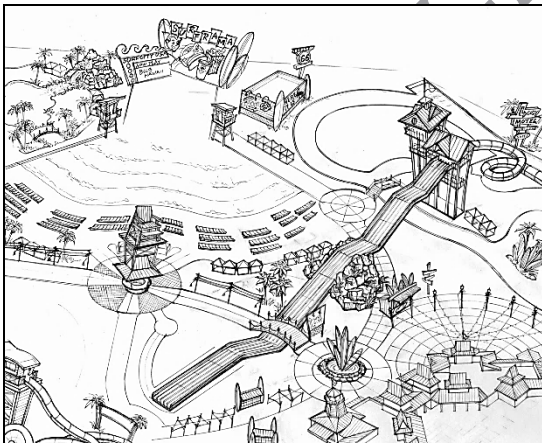


- A. emphasis.
- B. balance.
- C. rhythm.
- D. scale.

9. In the given picture, the vanishing point is represented as



10. The perspective depicted in the given image is a/ an



- A. aerial perspective.
- B. one-point perspective.
- C. two-point perspective.
- D. atmospheric perspective.

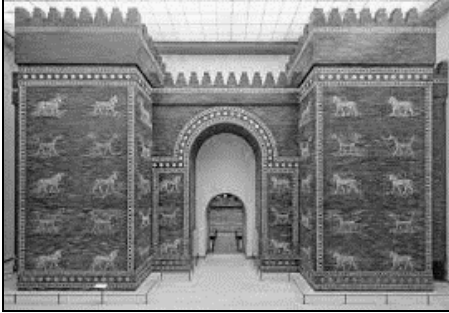
11. A human figure can be MOST appropriately captured through

- A. imagination.
- B. illustrations.
- C. photography.
- D. live modelling.

12. As compared to a 2D form of art, the 3D form

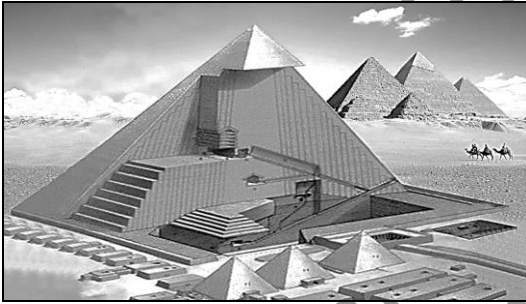
- A. is less complex.
- B. has a linear perspective.
- C. is created on flat surfaces.
- D. is drawn on x, y and z axes.

13. Which of the following pre-historic architectures is depicted in the given image?



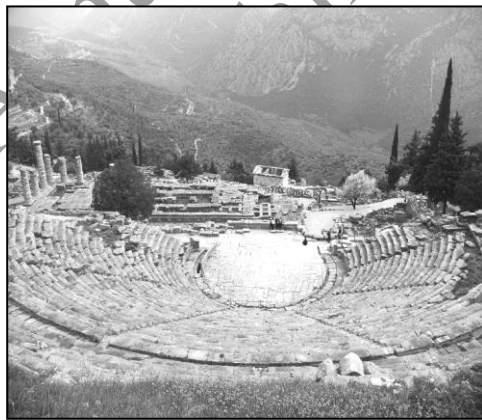
- A. The Great Stupa of Sanchi
- B. Parthenon Amphitheatre
- C. Hanging Gardens
- D. Ishtar Gate

14. The given image depicts a pre-historic ancient architecture that is



- A. Ziggurat.
- B. Ishtar Gate.
- C. The Great Pyramid of Kufu.
- D. The Colosseum, Rome, Italy.

15. The given image portrays the civilisation of



- A. Assyria.
- B. Babylon.
- C. Ancient Greece.
- D. the Indus Valley.

PLEASE TURN OVER THE PAGE

16. The statue of Myron Disco Bolos (Discuss Thrower) of the Greek civilisation portrays
- A. a human athlete.
 - B. the brutality of the emperors.
 - C. the kindness of the local people.
 - D. the actions of a mythical animal.

17. The BEST interpretation of the palette of King Narmer is that it symbolises
- A. divine authority.
 - B. strength and spirit.
 - C. military intelligence and absolute power.
 - D. the Egyptians glorification of life after death.

18. King Nebuchadnezzar II built the Hanging Gardens in the ancient city of Babylon.

This garden symbolises the King's

- A. victories.
- B. kindness.
- C. love for his wife.
- D. loyalty towards his people.

19. Read the following statements.

- It has 33 inscriptions engraved on pillars, large stones and cave walls.
- It adheres to the concept of Dhamma, defined as right behaviour, good conduct and decency towards others.

The given features highlight the historical site of the

- A. Ashoka Rock Edict.
- B. Human Headed Winged Lion.
- C. Standing Bodhisattva, Gandhara.
- D. Lion Capital Pillar, Polished Sandstone.

20. The Corinthian black-figure amphora with animal friezes has all of the following features EXCEPT that it shows

- A. animal figures such as the native boar, exotic lions and panthers.
- B. the mixture of the diverse nature of Greek art and culture.
- C. a two-handled storage jar back in ancient Greece.
- D. the Greeks' fascination with familiar culture.

Please use this page for rough work

AKU-EB
Annual Examination 2023 for
Teaching and Learning only

Please use this page for rough work

AKU-EB
Annual Examination 2023 for
Teaching and Learning only